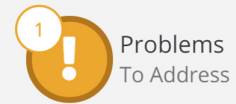
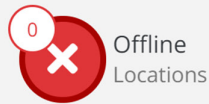
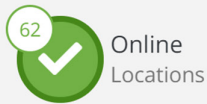













Dashboard [What is this?](#)

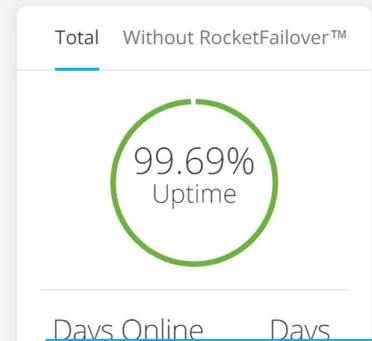
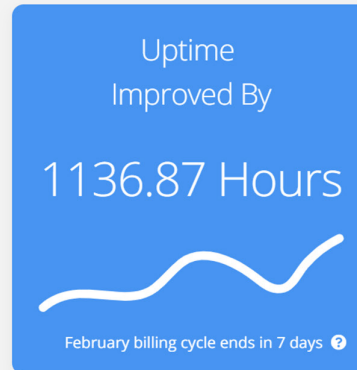


Organization Overview 

Search Refresh Automatically

 Advanced Filters  Collapse All

-  +  Great Pizza, Inc.
-  -  Summit Smoothies
-  -  Miami Restaurant
-  -  Network Rack



iStatus®

Easy Visibility & Monitoring For Your Critical Networks

Monitoring your connectivity and IoT devices (such as critical cloud applications, point-of-sale systems, and VOIP systems) for your business is easier than ever. iStatus eliminates complicated dashboards with complex data that does not tell you when there's a problem. iStatus is user-friendly, non-technical, and provides IntelligentAlerts™ that keep you informed when issues occur. The smartphone widget allows you to quickly view your information from any location.

Affordable With Instant Alerts

iStatus utilizes cost-effective hardware to provide instant and effortless visibility of your network. iStatus proactively monitors critical network components. When any connectivity issue is detected, iStatus sends IntelligentAlerts via push notifications and/or email to help you quickly resolve the issue.

Simple Setup & Easy To Use

Easily add iStatus to any new or existing network and stop guessing about your network issues. iStatus dashboard gives you a birds-eye view of all remote location Internet connections. In the event of a connection failure, iStatus sends detailed alerts with everything you need to respond immediately. By utilizing cost-efficient, secure hardware probes, simply plug in the device, configure a few settings, and start monitoring your network in minutes.

Primary Features:

- Easily understand if your Internet connection is online or offline.
- Proactively monitor critical applications such as point-of-sale or VoIP phones.
- Identify network issues on your LAN/WAN with CongestionDetection™.
- Dramatically reduces downtime caused by Internet outages.
- Low cost & Live-In-Five™ easy install.



iStatus On Your Homescreen

With a simple left swipe to view widgets, iStatus provides a 5-second overview of your network connectivity without the hassle of logging into another dashboard. Quickly navigate to our most-used features with iStatus Home Screen Menu via Apple iOS 3D Touch feature.

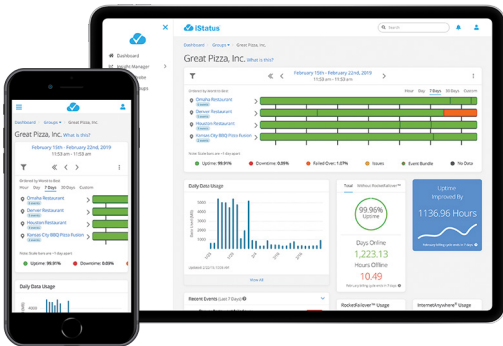
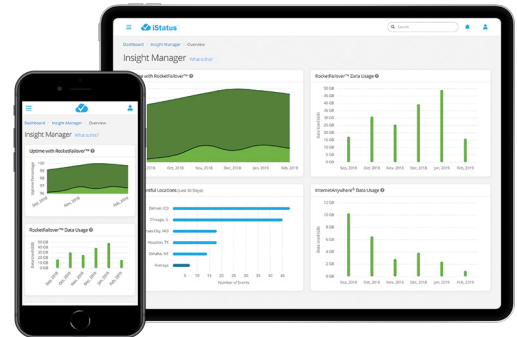


Dashboard

Quickly and effortlessly check the Internet connectivity status at each of your locations with information organized on one dashboard. Simple online, offline, RocketFailover, and issue icons indicate the status of locations and the data usage bar allows you to manage data between multiple locations for your current month.

Insight Manager

Proactively manage your network connectivity with intelligent analytics, real-time data updates, and easy to understand network insight. With real-time timestamps, you can view when your data was last updated. Coupled with simple, human-readable alerts, you can easily monitor an individual location, data usage, uptime, and failover events. Also, generate additional reports that allow IT teams or management to better understand network priorities.



ConnectionValidation™

ConnectionValidation is a patented iStatus technology that allows continuous testing and validating of backup connections to ensure our AlwaysOn™ 4G can meet your business needs. With peace of mind verification, ConnectionValidation ensures that in the event of an ISP Internet outage, your business operations remain seamless.

IntelligentAlerts™

By reducing thousands of notifications to just a handful of IntelligentAlerts, iStatus makes multi-location network management easier, delivers critical information to key stakeholders, and helps solve connectivity issues quicker. IntelligentAlerts for bulk push notifications and email reduces information overload. With the Business Hours feature, you set notifications for a specific window of time and it bundles IntelligentAlerts from overnight data into one email that's sent to you before your next business day.

